



The PMI Advanced  
**Pore Pro Porometer**  
**PPP-20A**

Not just products...solutions!

## DESCRIPTION

The PMI Pore Pro Porometer is a low pressure instrument designed for the determination of pore size in geotextile fabrics. The robust instrument is easy to use and provides fast and accurate testing results on a variety of filter samples. Conforms to standard ASTM 316-03.

## CAPABILITIES

- Diameter of the most constricted part of a through pore (pore throat)
- Bubble point
- Mean flow pore diameter
- Pore diameter range
- Pore distribution
- Gas permeability
- Gurley, Frazier, Rayls Permeability

## FEATURES

- Clamp-on Sample Chamber
- Fully automated and computer controlled
- User-friendly, windows based software: commonly used graphical programming system
- Auto switching between flow meters

# SOFTWARE



Figure 1  
Main Screen

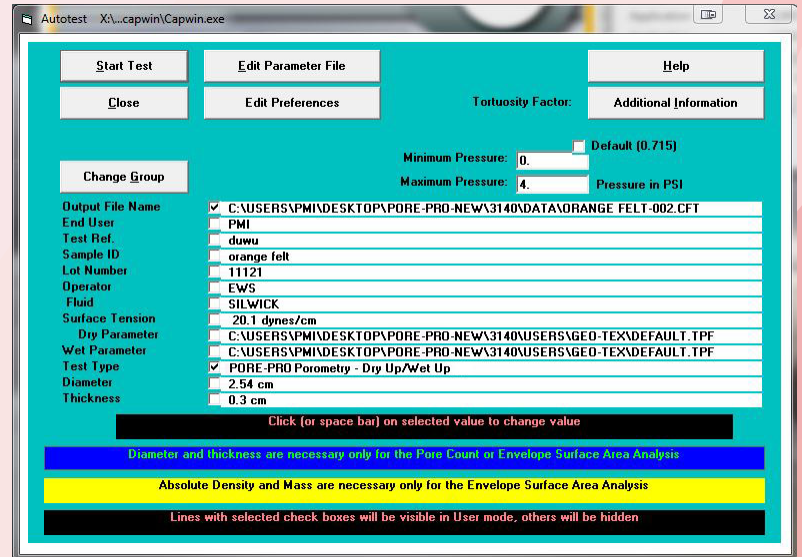


Figure 2  
AutoTest Screen

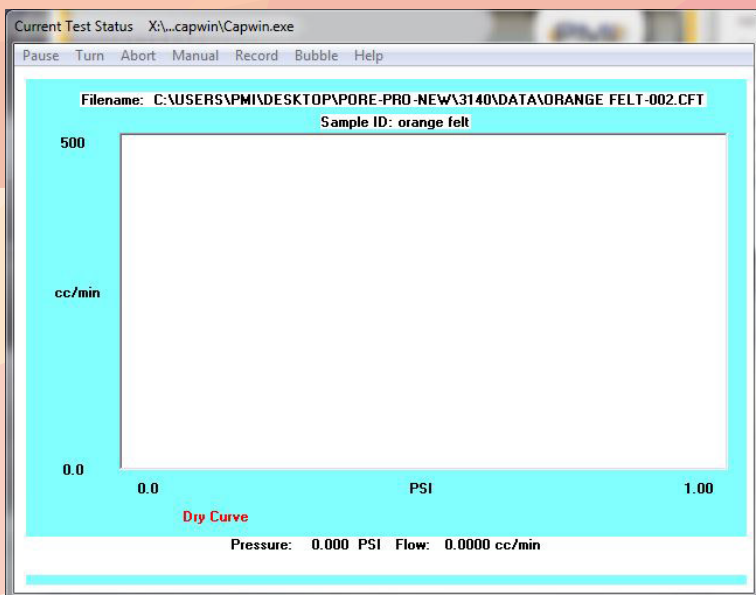


Figure 3  
Test Status

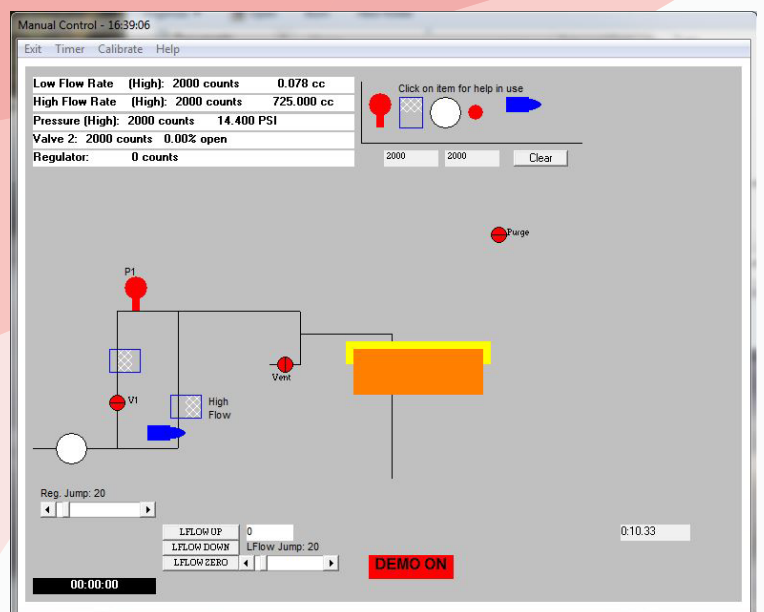


Figure 4  
Manual Control

# SPECIFICATIONS

- Pore Size Range: 0.3-500 microns
- Pressure Range: 20 psi
- Pressurizing Gas: clean, dry, compressed air or nonflammable, noncorrosive gas
- Pressure Transducer Range: 20 psi
- Sample holder block dimensions: 25 mm with ability to have different sample adapter
- Bottom-up Clamp-on Chamber
- Pressure Controllers:
  - Controller# 1 : 20 psi
  - Controller# 2 : Not needed
- Pressure Sensors:
  - Sensor # 1 : 20 psi
  - Sensor # 2 : Not needed
  - Sensor # 3 : Not needed
- Flow Sensor:
  - Sensor # 1 : 500 LPM
  - Sensor # 2 : NA
- Flow sensor switching: Not needed
- Pressure sensing accuracy: 0.1 of Full Scale
- Pressure resolution: 1in 60,000
- Power Supply: 220 V/AC
- Dimensions: 27x18x12

**Disclaimer** : Other specifications of this product are also available.  
Design subject to change without notice.

# SALES & SERVICES

Our sales team is dedicated to helping our customers find which machine is right for their situation. We also offer custom machines for customers with unique needs. To find out what we can do for you, contact us.

We are committed to customer support including specific service products, short response times & customer specific solutions. To quickly & flexibly meet our customer's requirement, we offer a comprehensive range of services.



Customize your machine  
today!

The most advanced, accurate, easy to use  
and reproducible porometers in the world.



20 Dutch Mill Rd, Ithaca, NY 14850, USA  
Toll Free (US & Canada): 1-800-TALK-PMI (1-800-825-5764)  
Phone: 607-257-5544 Fax: 607-257-5639

Email: [info@pmiapp.com](mailto:info@pmiapp.com)

[www.pmiapp.com](http://www.pmiapp.com)

